

## **NEW! PatchSee - RJ45 Patch Cords with Light Identification**

**™ PatchSee®**  
Optical Technology

BasicPatch Cat 5e	Class6Patch Cat 6	PCI6Patch Cat 6a	PhonePatch
PatchClip	PRO-PatchLight	Test Sample 10 Giga	Test Sample Cat 5e

### BasicPatch

Category 5e UTP and FTP RJ45 Patch Cords



#### Category 6 RJ45 patch cords with optical fibre

available unshielded (UTP) and foil shielded (FTP) 100 Ohms  
6 lengths from 0.6 m to 4.9 m

Feet	2	4	5	7	10	16
m	0.6	1.2	1.5	2.1	3.1	4.9

black PVC sheath  
part number and length printed on the boot  
compatible with color coded PatchClips for the first level of identification

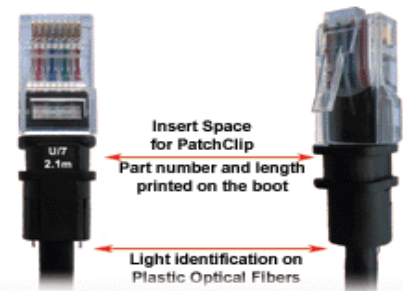
#### A reliable patch cord for all networks :

conforms to EIA/TIA 568-B2.2-1 category 5e  
quality control :  
~ 100% testing of electrical and optical properties  
~ each patch cord identified by a unique serial number

#### Product part numbers and packaging :

U/x for category 5e UTP RJ45 patch cord, where x is the length in feet  
F/x for category 5e FTP RJ45 patch cord, where x is the length in feet  
Packaging : plastic bags of 12 cables

### product focus



### 6 lengths available



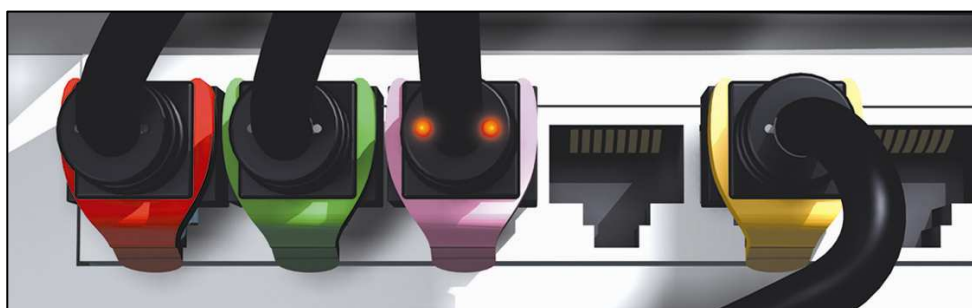
**PatchSee,  
intelligent patch cord**

# **BasicPatch**

## **Cat 5e UTP RJ 45 patch cords**

### **Technical Data Sheet**

**Patent Pending**



#### **Cat 5e RJ 45 Patch Cords :**

**PatchSee** RJ 45 Patch Cords are designed, and individual tested for connecting the network equipment to patch panel and network user outlet. They are warranted for cat 5e TIA/EIA-568-B-2.1 June 2002 Channel test on a Permanent Link certified for transmission frequencies of up to 100 MHz.

#### **PatchSee Concept and main characteristics**

- Light identification by plastic optical fiber,
- Many lengths 2 feet (0.6 m) up to 16 feet (4.9 m) for patch panel and terminal link,
- Color cable: Black with white marking,
- Color boot: Grey with white marking,
- Movable color clip, 16 colors available,
- Packaging: boxes of 12 pieces, depending of the length,
- Available in cross patch cord,
- Marking on the boot: length and P/N,
- Unique serial number marking on the cable,
- Individual tested: each patch cord is individual tested,
- Electrical performance tests performed on a sampling basis (1000 Base T Warranty) (Return Loss, Attenuation, NEXT, etc...)

## Technical Data Sheet

### Construction

<b>Number of pairs</b>	4
<b>Conductor</b>	Stranded bare copper wire
<b>Gage</b>	24 AWG
<b>Insulation</b>	Foam Skin Polyethylene
<b>Pair screen</b>	n a
<b>Optical wave guide</b>	2 POF 0.5 mm
<b>Drain</b>	n a
<b>Jacket</b>	PVC Black with white printing
<b>Overall diameter</b>	5.8 mm
<b>Plug housing</b>	UL 1863 Polycarbonate
<b>Contacts</b>	Moved contacts
<b>Contact Plating</b>	Gold 50 $\mu$ inches gold minimum (1.2 $\mu$ m)
<b>Shielding</b>	n a

### Mechanical Properties of the cable

<b>Fire Propagation Test</b>	<b>Temperature range During operation</b>	<b>Fire load</b>	<b>Bending radius</b>
UL 444 VW 1 Flame test	-20°C up to +75°C	372 MJ/km	>25 mm without load

### Electrical Properties of the cable (at 20°C +/- 5°C)

<b>DC loop resistance</b>	<b>Insulation resistance (500V)</b>	<b>Capacitance at 800 Hz</b>	<b>Impedance 1-100MHz</b>	<b>Impedance 100-250MHz</b>	<b>Propagation delay</b>	<b>Test voltage (DC, 1 min)</b>
< 340 $\Omega$ /km	> 2000 M $\Omega$ *km	Nom. 43nF/km	100 +/- 15 $\Omega$	NA	< 427 ns/100m	1000 V